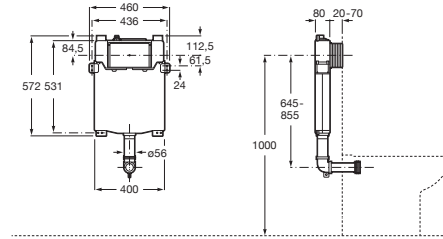


IN-WALL

## BASIC TANK ONE COMPACT - Naked Concealed Cistern



TECHNICAL DRAWINGS



### FEATURES

Dynamic pressure range: 0,1 - 10 Bar

Flushing type preset: Dual flush 3/6 litres

Minimum fixation depth (mm): 80

Operating plate position: Frontal

Suitable for: Floorstanding toilet

Tank depth (mm): 80

Water inlet position: Top



Flushing type  
Flushing type: Dual flush 2/4 litres



Flushing type  
Flushing type: Dual flush 3/4.5 litres



Flushing type  
Flushing type: Dual flush 3/6 litres

COMPATIBLE WITH



**In-Wash®** - Back to wall single floorstanding Rimless vitreous china smart toilet. Needs power supply.

803063..1



**Single floorstanding Rimless WC** with dual outlet

347737..0



**ROUND** - Back to wall single floorstanding Rimless WC with dual outlet

3470N7..0



**PL5 DUAL (ONE)** - Dual flush operating plate

89019900.



**PL4 DUAL (ONE)** - Dual flush operating plate for concealed cistern

89019800.



**PL3 PRO SINGLE (ONE)** - Vandal-proof stainless dual flush operating plate for concealed cistern

890197104



**PL3 PRO DUAL (ONE)** - Vandal-proof stainless dual flush operating plate for concealed cistern

890197004



**PL2 SINGLE (ONE)** - Single flush operating plate for concealed cistern

890196100



**PL2 DUAL (ONE)** - Dual flush operating plate for concealed cistern

89019600.



**PL1 SINGLE (ONE)** - Single flush operating plate

890195100



**PL1 DUAL (ONE)** - Dual flush operating plate for concealed cistern

89019500.



**PL10-E (ONE)** - Vandal-proof dual flush operating plate

890189500



**PL10 PRO DUAL (ONE) - Vandal-proof stainless steel dual flush operating plate**

890189304



**PL10 DUAL (ONE) - Dual flush operating plate for concealed cistern**

89018920.



**PL10 DUAL (ONE) - Dual flush operating plate for concealed cistern**

89018900.



**PL7 DUAL (ONE) - Dual flush operating plate for concealed cistern (crystal finish)**

89018830.



**PL7 DUAL (ONE) - Dual flush operating plate for concealed cistern (matt finishes)**

89018820.



**PL6 DUAL (ONE) - Dual flush operating plate**

89018500.



**EP2 - Electronic glass finished operating plate for concealed cistern with automatic or touchless dual flush**

890104009



**EP1 - Electronic glass finished operating plate for concealed cistern with automatic or touchless dual flush**

890104008



**PL3-E PRO (ONE) - Electronic stainless steel operating plate for concealed cistern with automatic or manual dual flush**

890097500

## In-Wall

Systems that combine efficiency and technology to deliver the best performance.



### INSTALLATION AND USER MANUALS



[Installation handbook](#)